

Papai Noel Existe

Flauta

$\text{♩} = 146$

4

6

9

12

16

20

21

Flauta

$\text{♩} = 146$

4

6

9

12

16

20

21


23

25

26




Example 10 continues with measures 28-30. The notation shows a continuation of the complex rhythmic patterns, with measures 28 and 29 featuring dense, multi-measure rests and complex rhythmic figures, and measure 30 showing a continuation of the complex rhythmic patterns.

31 

33

Example 33

35 

Example 10 continues with measures 37-40. The notation features a treble clef and a key signature of three flats (B-flat, E-flat, A-flat). The melody is composed of eighth and sixteenth notes, often beamed together. Measure 39 includes a fermata over a dotted quarter note. The piece concludes in measure 40 with a final chord and a double bar line.

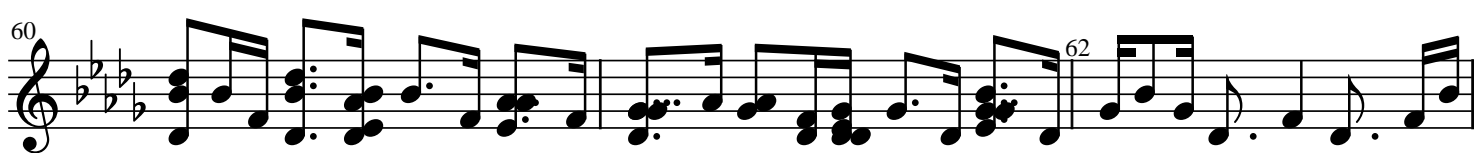
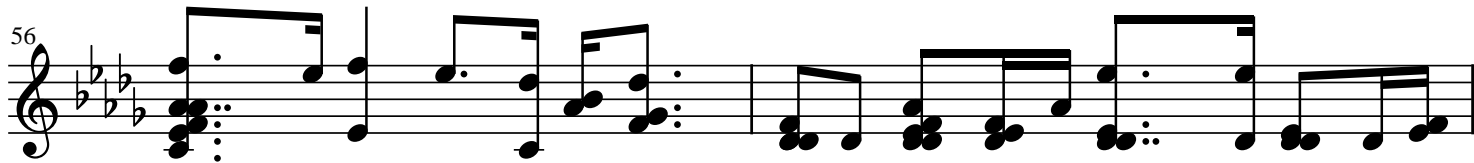
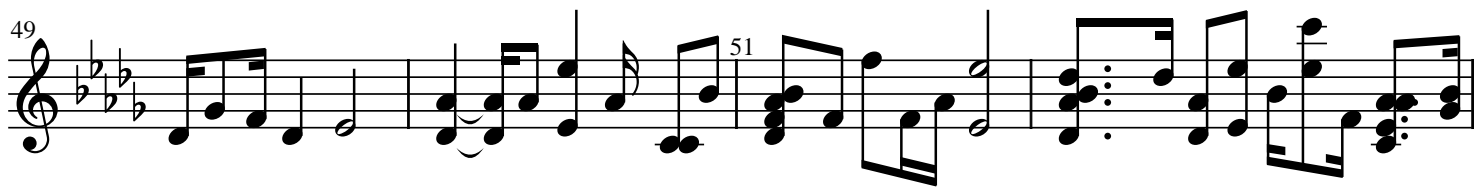
40

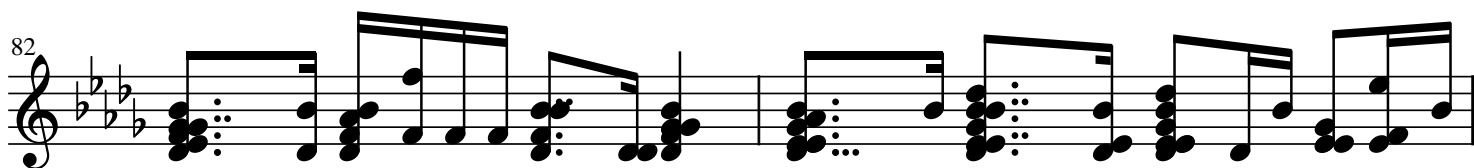
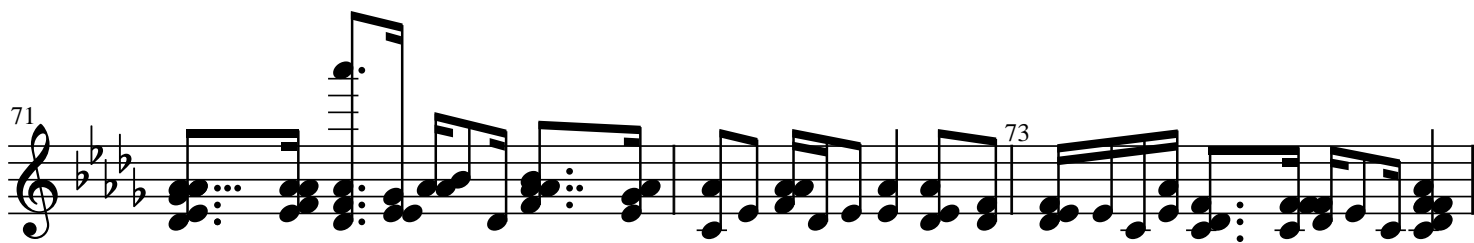
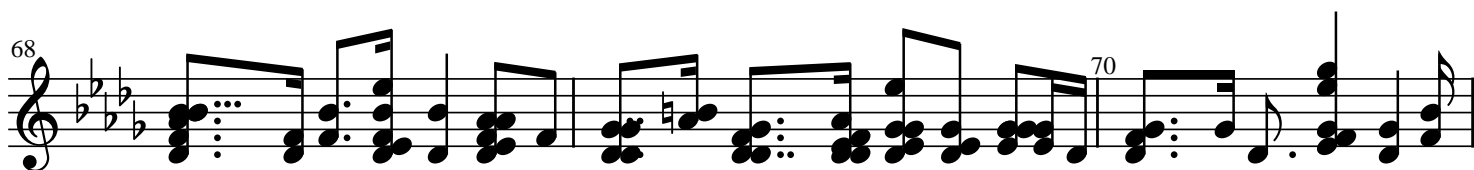
42

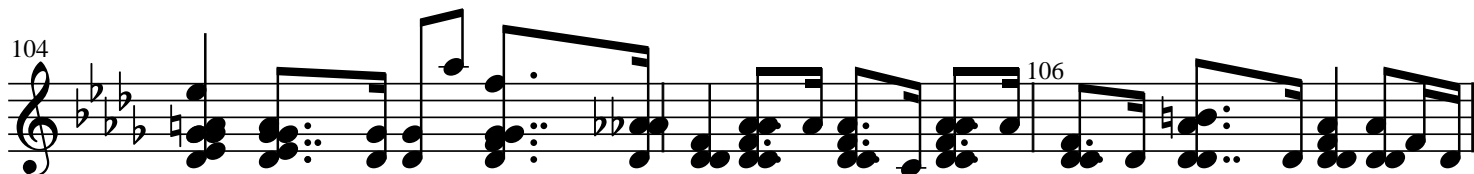
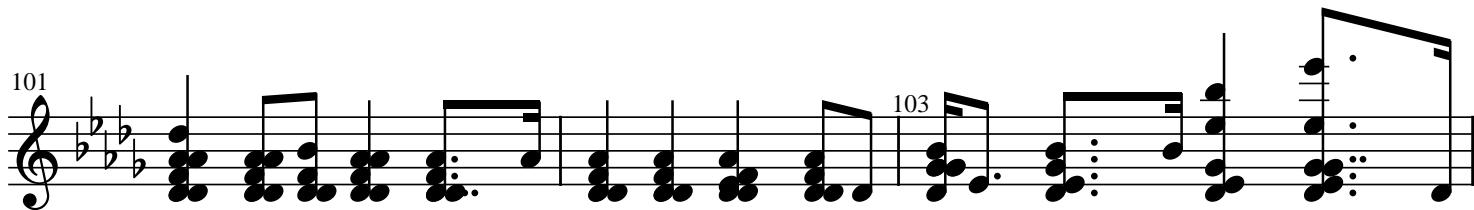
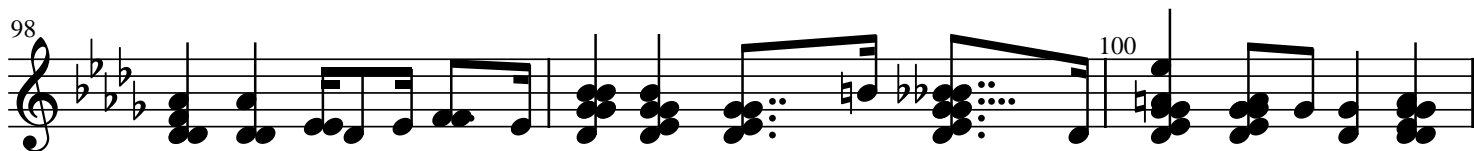
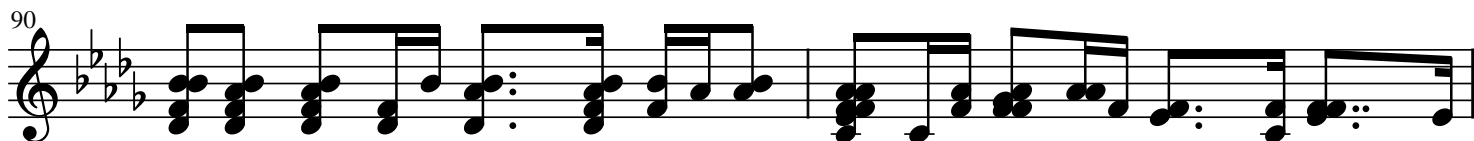
43

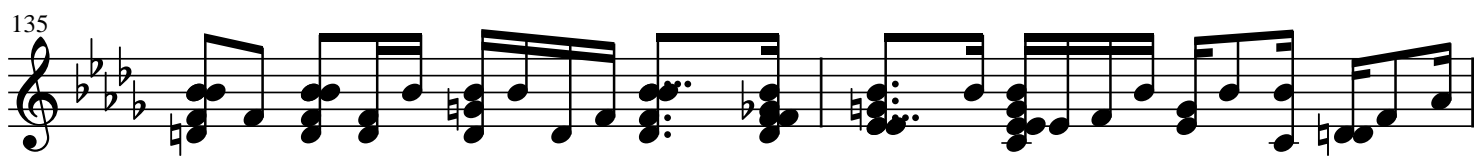
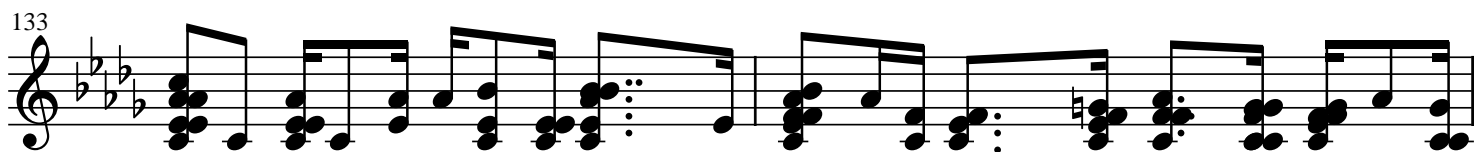
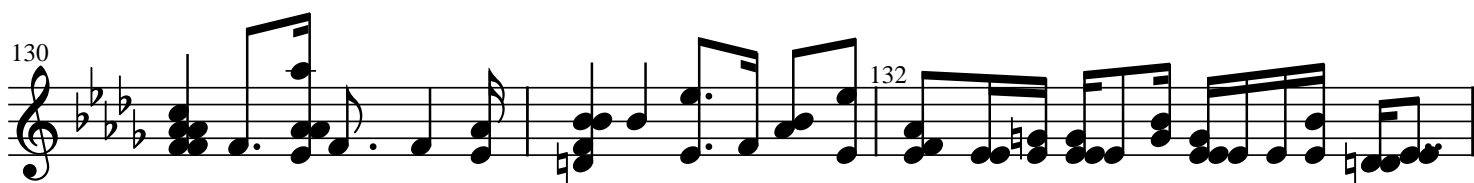
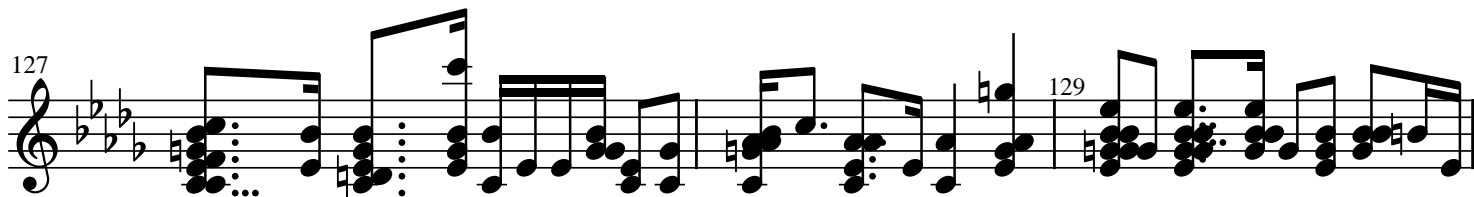
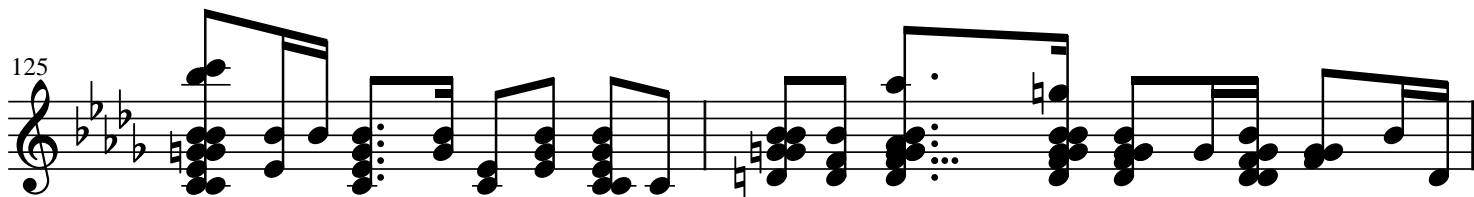
45

The musical score for 'The Rose Tree' is written for a single melodic line on a treble clef staff. The key signature is B-flat major (two flats: B-flat and E-flat). The time signature is 4/4. The score begins at measure 43 and continues through measure 45. Measure 43 contains a whole note chord (F4, A4, C5) followed by a half note chord (F4, A4, C5). Measure 44 contains a half note chord (F4, A4, C5) followed by a half note chord (F4, A4, C5). Measure 45 contains a half note chord (F4, A4, C5) followed by a half note chord (F4, A4, C5). The notes are represented by black dots on the staff lines.









137

139

This staff contains measures 137, 138, and 139. It features a treble clef and a key signature of three flats. The music consists of a series of chords and eighth notes, with some measures containing triplets.

140

This staff contains measures 140 and 141. It continues the musical sequence with various chordal textures and melodic lines.

142

This staff contains measures 142 and 143. The notation includes a variety of rhythmic values and chord structures.

144

146

This staff contains measures 144 and 145. Measure 146 is indicated at the end of the staff. The music features complex harmonic arrangements.

147

149

This staff contains measures 147 and 148. Measure 149 is indicated at the end of the staff. The notation includes a variety of rhythmic values and chord structures.

151

153

3

This staff contains measures 151 and 152. Measure 153 is indicated at the end of the staff. The notation includes a variety of rhythmic values and chord structures. A measure rest for three measures is shown at the end of the staff.